

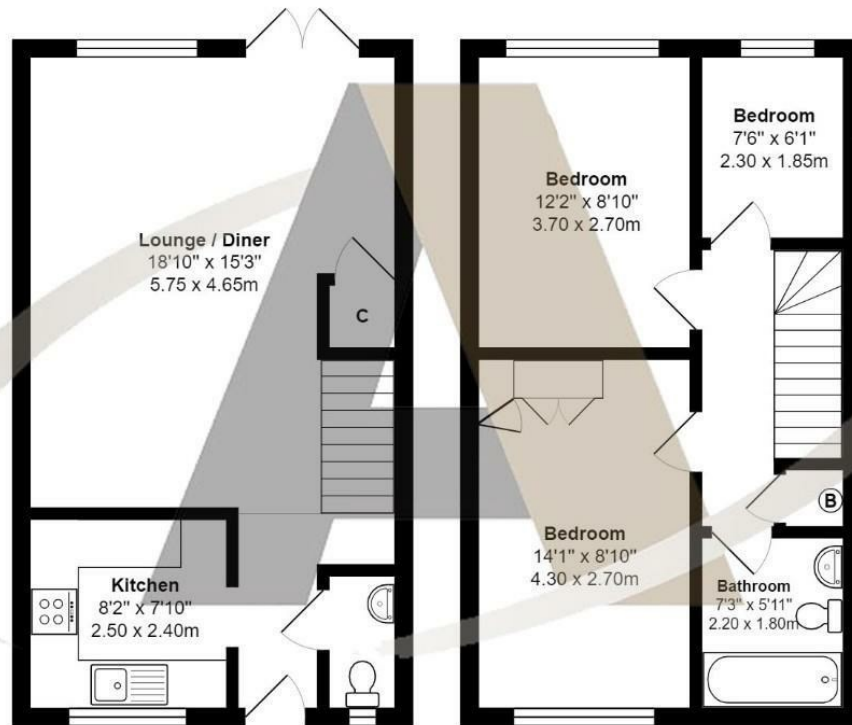


2 Wentworth Close, Ashford, TW15 2HG

Aspen Estate Agents are delighted to introduce this lovely three-bedroom house situated in Wentworth Close, Ashford. This property is conveniently located for many of the area's parks, schools, local amenities and transport links and should be seen to be appreciated. The current accommodation comprises; three bedrooms, a modern bathroom, a separate kitchen and a large lounge / diner with doors onto the well-maintained garden. Other notable features of this property include a garage in the block, an allocated parking space, gas central heating, double glazing, real oak flooring and a downstairs WC. Offered to the market with no onward chain- prompt viewings are encouraged and can be booked by calling Aspen Estate Agents.



Floor Plan



Wentworth Close, Ashford

Total Area: 831 ft² ... 77.2 m²

All measurements are approximate and for display purposes only



Features

- 3 Bedrooms
- Large Lounge / Diner
- Separate Kitchen
- Garden
- Downstairs WC
- Oak Flooring
- Garage and Allocated Parking
- No Onward Chain

